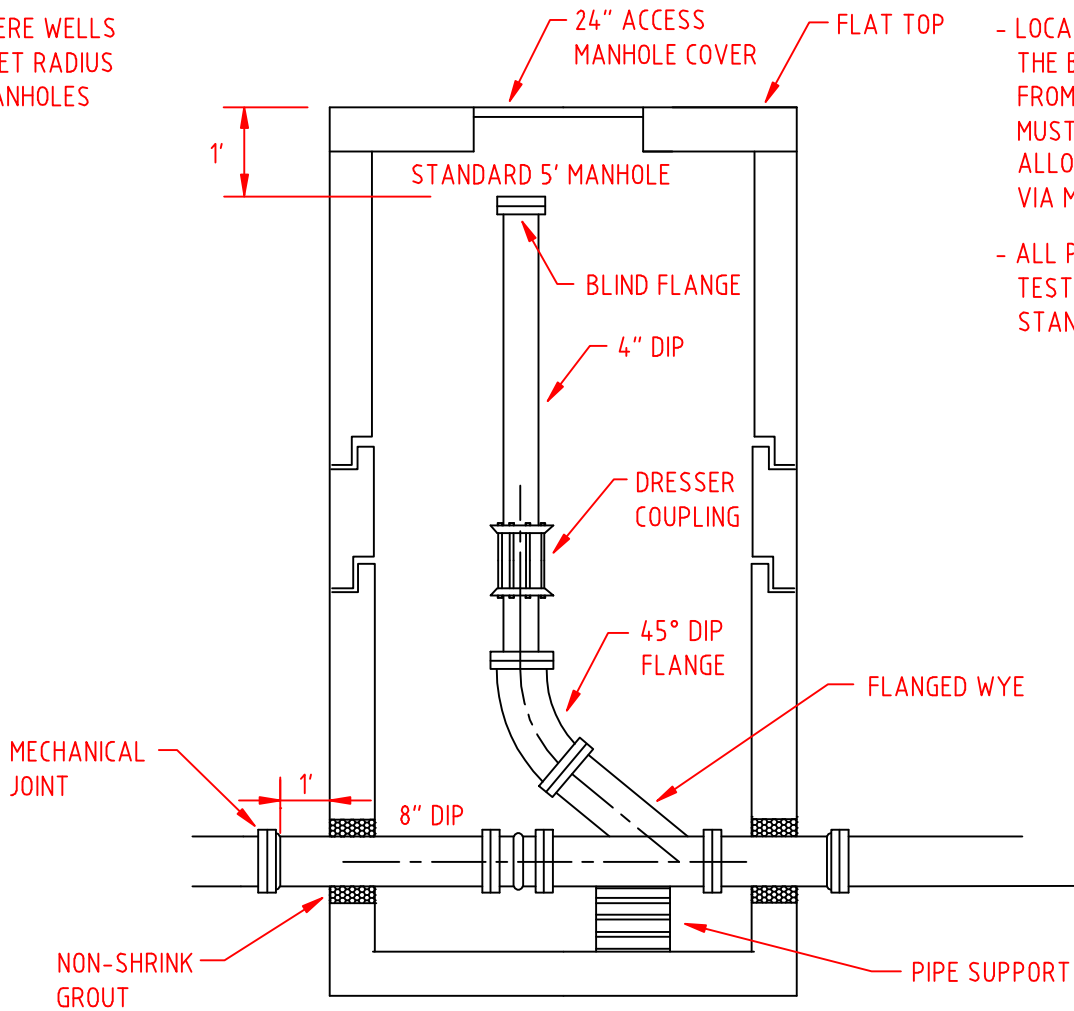


- FOR USE ONLY WHERE WELLS ARE WITHIN 100 FEET RADIUS OF SEWER LINE/MANHOLES



- LOCATE ACCESS COVER SUCH THAT THE BLIND FLANGE IS ACCESSIBLE FROM TOP OF MANHOLE. COVER MUST ALSO BE IN A POSITION TO ALLOW MANHOLE INGRESS/EGRESS VIA MANHOLE STEPS.

- ALL PIPE AND FITTINGS TO BE TESTED TO WATER QUALITY STANDARDS.

UNION COUNTY PUBLIC WORKS DEPARTMENT
UNION COUNTY, N.C.

STANDARD DETAIL

CLEANOUT MANHOLE

DATE:
7-29-08

10A